



Springslade Drive,
Birmingham, B24 0JW

Offers Over £225,000

This is a very stylish modern property, beautifully positioned in a cul de sac location on this ever popular residential location and it benefits from double glazing and gas central heating (both where specified).

The interiors are excellent and include the following: an enclosed porch, lovely generous living room and dining kitchen with double doors out to the garden.

To the first floor are two excellent double bedrooms and a bathroom with white suite.

Outside is a fore garden with parking space to side and to the rear is a well manicured garden with patio, lawn and planted shrubs.

Tenure: We can confirm the property is Leasehold.

Ground Rent: Peppercorn

Council Tax Band: We can confirm the Council Tax Band is B.

Services Connected: Electric, gas, water & drainage.

Viewings: Strictly via appointment through our Walmley Residential Sales Department on 0121 351 4000

or via Walmley@paulcarrestateagents.co.uk



Room Measurements

Lounge 13' 9" x 12' 10" (4.19m x 3.91m)

Kitchen/Diner 12' 10" x 9' 2" (3.91m x 2.79m)

Bedroom 1 12' 10" x 11' 11" (3.91m x 3.63m)

Bedroom 2 11' 2" x 6' 1" (3.40m x 1.85m)

Bathroom 6' 5" x 6' 5" (1.95m x 1.95m)

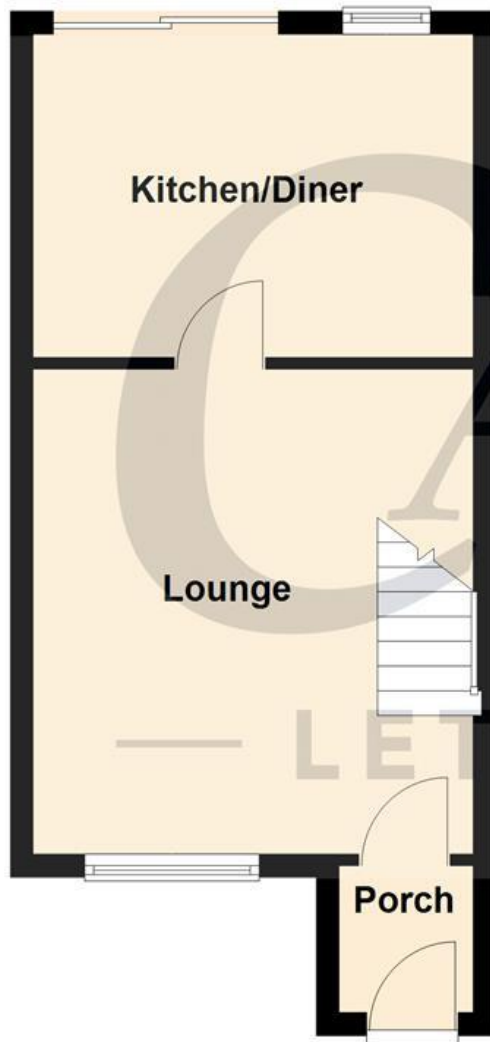




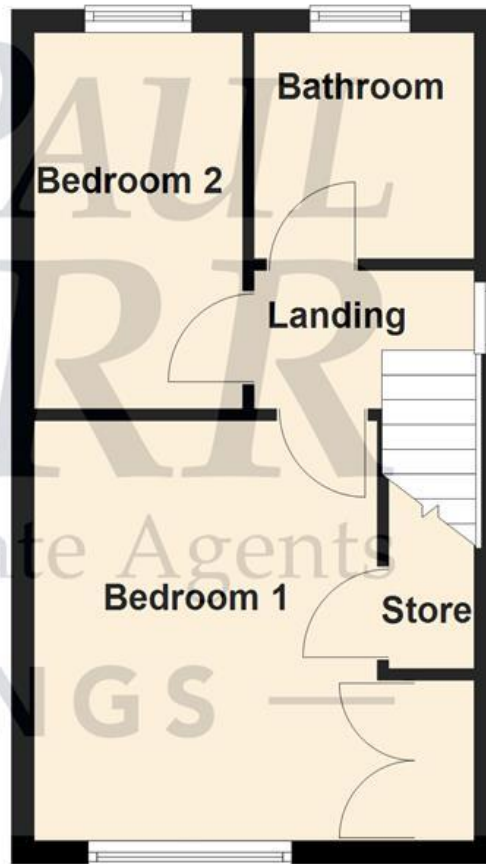
Floor Plan

This floor plan is not drawn to scale and is for illustration purposes only

Ground Floor



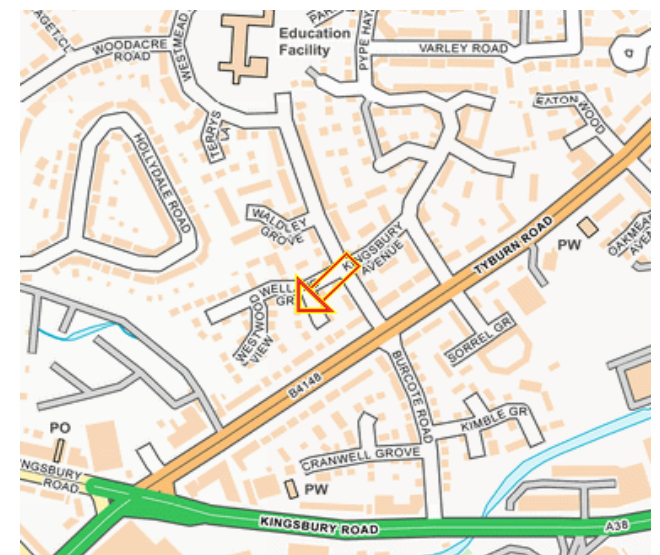
First Floor

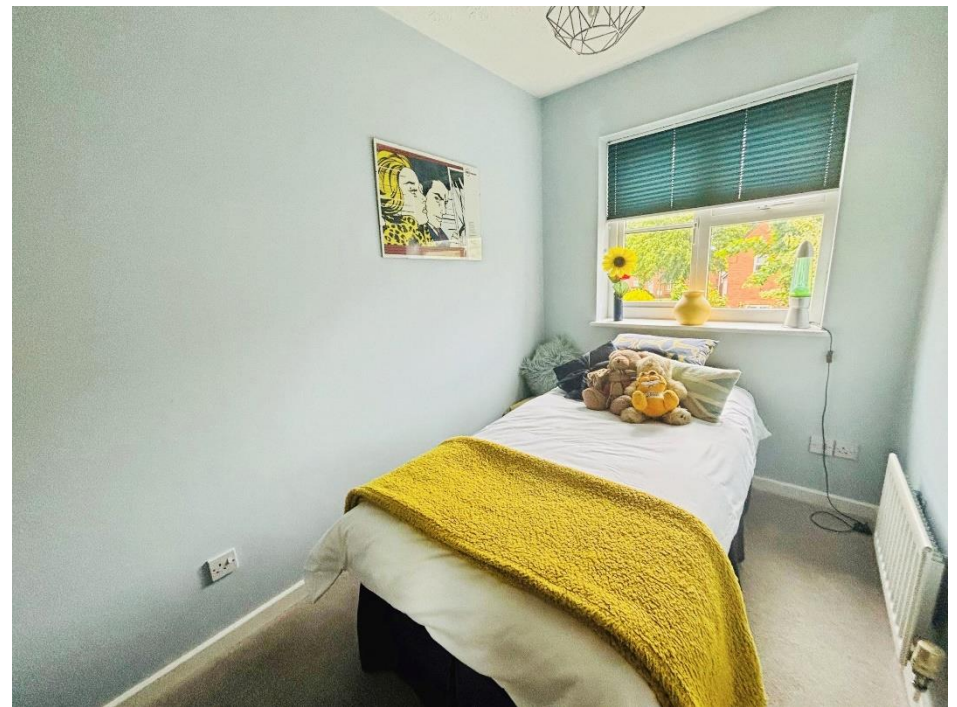
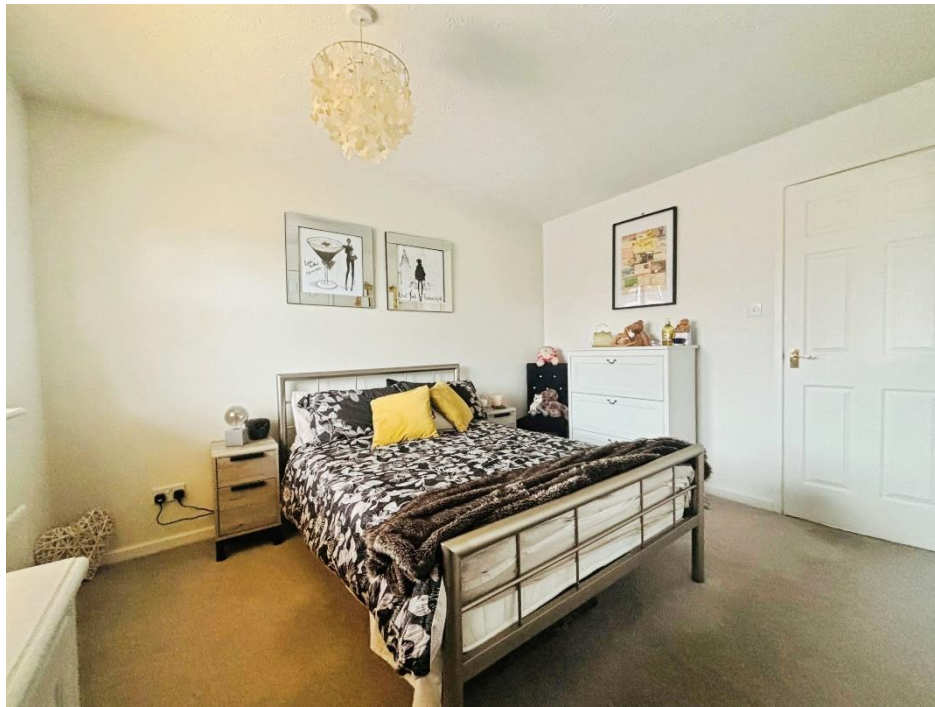


Energy Performance Rating

Score	Energy rating	Current	Potential
92+	A		
81-91	B		87 B
69-80	C		
55-68	D	66 D	
39-54	E		
21-38	F		
1-20	G		

Map Location







Agent's Note:

Every care has been taken with the preparation of these Sales Particulars but they are for general guidance only and complete accuracy cannot be guaranteed. If there is any point which is of particular importance, professional verification should be sought. The mention of any fixtures, fittings and/or appliances does not imply they are in full efficient working order as they have not been tested. All dimensions are approximate. Photographs are reproduced for general information and it cannot be inferred that any item shown is included in the sale. These Sales Particulars do not constitute a contract or part of a contract.
Came on the market: 28th May 2025